

## BELZONA PRE-STRESSED CONCRETE BEAMS

### CUSTOMER

Oil Refinery in Canada

### APPLICATION DATE

September 1998

### APPLICATION SITUATION

Scale Beams of the refinery truck scale, originally installed in the 1970s.

### PROBLEM

Concrete severely eroded over time.

### PRODUCTS

Belzona® 4911 (Magma TX Conditioner)

Belzona® 4111 (Magma-Quartz)

### SUBSTRATE

Pre-stressed concrete

### APPLICATION METHOD

Application was carried out in accordance with a modified version of Belzona Know-How System Leaflet TCC-9.

### BELZONA FACTS

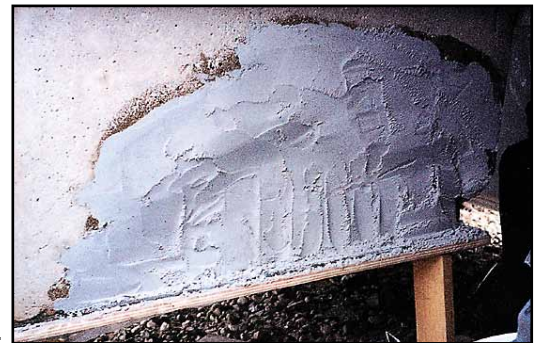
The cost of replacement versus repair of the beams was a key factor. The ability to force-cure the product with heat resulted in reduced downtime.

### PICTURES

1. Area of worst damage, re-bar and bottom metal spine being repaired.
2. Application in progress. Note the polyethylene covered plywood being used as a former.
3. Completed repair.



1.



2.



3.

For more examples of *Belzona Know-How In Action*, please visit <http://khia.belzona.com>



ISO 9001:2008  
Q 09335  
ISO 14001:2004  
EMS 509612

Belzona products are  
manufactured under an ISO  
9000 Registered Quality  
Management System.

UK • USA • Canada • China  
[www.belzona.com](http://www.belzona.com)

  
**BELZONA®**  
Repair • Protect • Improve